



Le Menda Residences Penthouse

Experience unparalleled luxury in our stunning penthouse. With breathtaking views and exquisite finishes, this is your ultimate sanctuary in the sky.

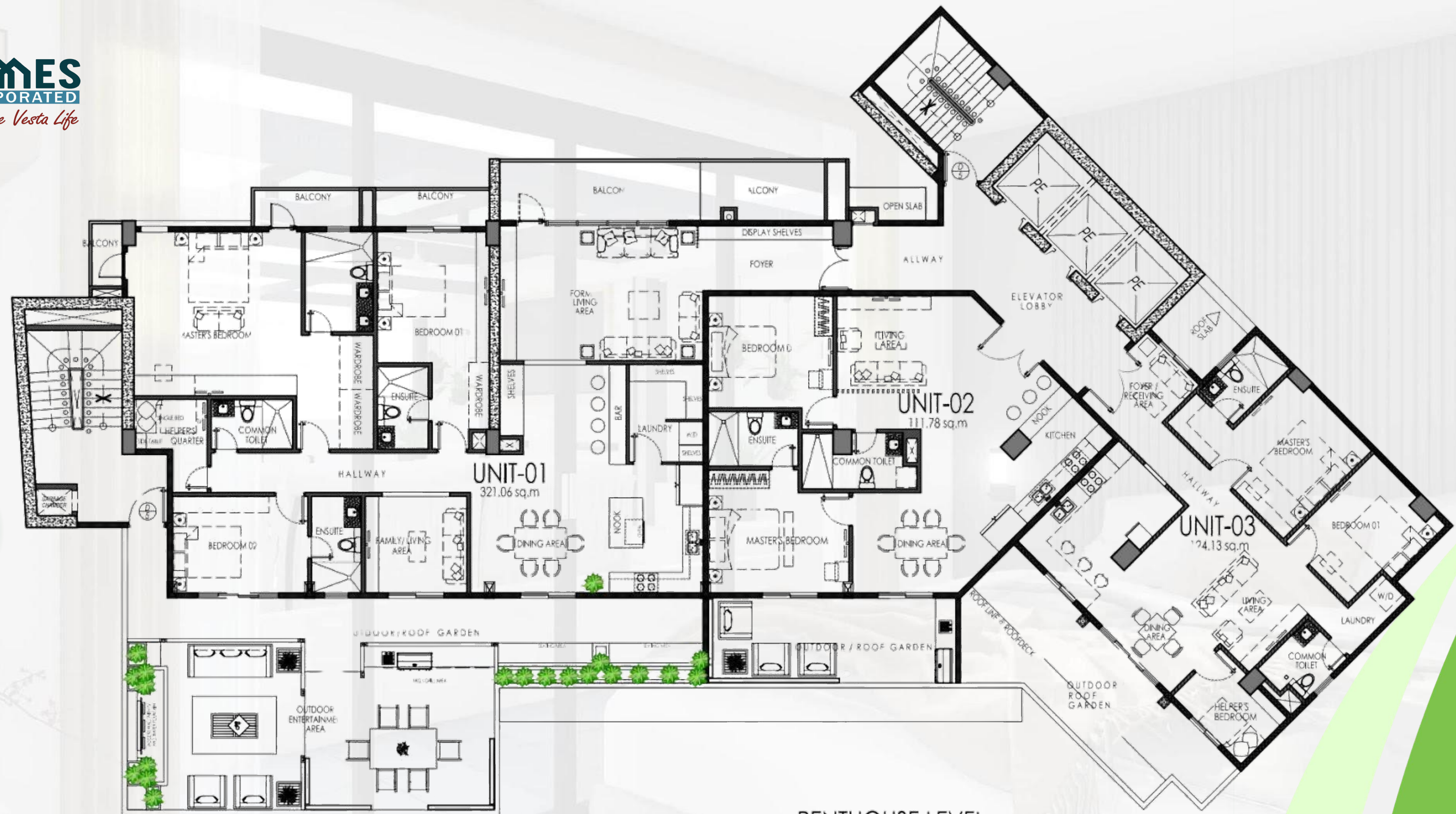


CONTACT US

(+63) 943 312 5445
(+63) 995 101 9010 gabrielrealty101@gmail.com
cocoytoledo@gabrielrealtors.com

www.GabrielRealtors.com

Penthouse Floor Plan



PENTHOUSE LEVEL
SCALE 1:120 METERS



PENTHOUSE UNIT 1



Layout Unit 1



PENTHOUSE UNIT 1
SCALE 1:120 METERS

Unit Features

- 3-bedroom
- 5 Balcony
- 3 Ensuite and 1 Common Toilet
- Outdoor Entertainment Area
- City / Mountain View
- Inclusive of 2 Parking Lots
- Total Floor Area: 321.06 sq.m





BEDROOM
Architect's Perspective



BEDROOM
Architect's Perspective



BEDROOM
Architect's Perspective



BAR
Architect's Perspective



BAR
Architect's Perspective



DINING AREA
Architect's Perspective



DINING AREA
Architect's Perspective



ENTERTAINMENT AREA
Architect's Perspective

ENTRY
Architect's Perspective





KITCHEN DINING
Architect's Perspective



LIVING AREA
Architect's Perspective



LIVING AREA
Architect's Perspective



LIVING AREA BALCONY
Architect's Perspective



MASTER BEDROOM
Architect's Perspective



MASTER BEDROOM
Architect's Perspective



MASTER BEDROOM
Architect's Perspective



OUTDOOR AREA (EYE LEVEL)

Architect's Perspective



OUTDOOR AREA (EYE LEVEL)

Architect's Perspective



OUTDOOR DINING (EYE LEVEL)

Architect's Perspective



OUTDOOR AREA
Architect's Perspective