

Avída Towers Riala

LIVE WITHOUT COMPROMISE





 **AyalaLand**

LARGEST AND **MOST EXPERIENCED**
REAL ESTATE DEVELOPER IN THE PHILIPPINES.

AYALA is the first to develop Integrated Mixed Use Communities in VisMin

Cebu Business Park



Cebu I.T. Park





Cebu I.T. Park

Gabriel
REALTY & BROKERAGE

Cebu's Preferred IT and BPO Destination

27 hec

Global
Gateway

1ST PEZA

Accredited IT
Park

over
P24.6 b
land & infra
investments

Home to over
70%
of Cebu's BPO
industry

68,997
Jobs
generated

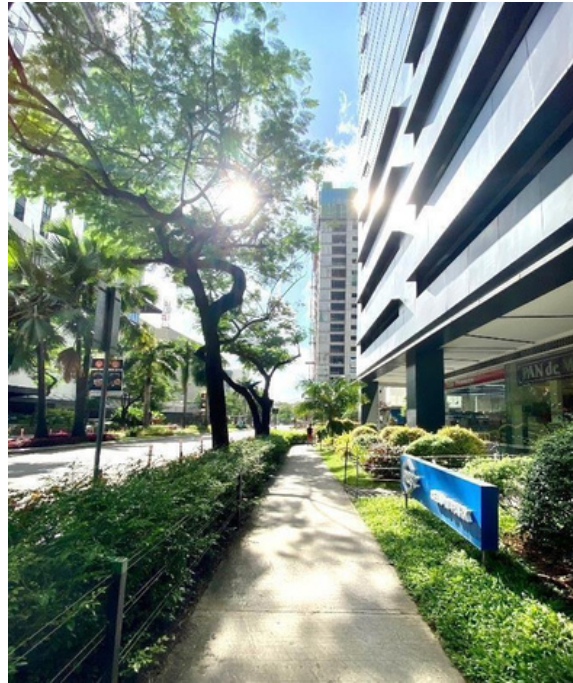
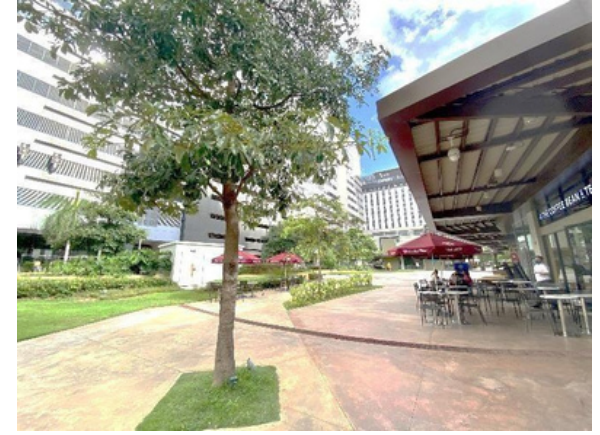
over
200
local & foreign
companies

Why Cebu IT Park?

Bustling

Its retail and dining hub complement the lifestyle of the growing community at Cebu IT Park.

Plus other establishments that offer 24/7 dining and entertainment.



Why Cebu IT Park?

Green

Garden Bloc offers relaxing and re-energizing space for its residents and busy office workers.



Why Cebu IT Park?

Ayala Mall

At the heart of the estate, is the 2nd Ayala Mall in Cebu and Seda Hotel along with 2 BPO Towers enhancing work and lifestyle experience.



P8 Billion
INVESTMENT

Why Cebu IT Park?



Home of
Avida Towers Riala


Gabriel
REALTY & BROKERAGE

Why Cebu IT Park?

Avída Towers

Riala

TOWER 5



SITE DEVELOPMENT PLAN

Tower 1 –
Completed Tower 2
– Completed Tower
3 – Completed
Tower 4 – Ready for Move-in
Tower 5 – Turnover 2025

21,246 sq.m.

TOTAL LAND AREA

Owned and Developed by
Avida Land Corp



BUILDING FEATURES

- Main lobby for each building
- Three (3) elevator units per building
- Five (5) levels of podium parking
 - Emergency power for common areas & inside units (lights, TV & refrigerator)
 - Garbage room per floor
 - Fire alarm and sprinkler system
- Mailbox per unit located at each building lobby
- Water tanks for emergency water supply
 - Electricity, telephone, cable TV and internet-ready units
- 24-hour security services & CCTV's in critical areas

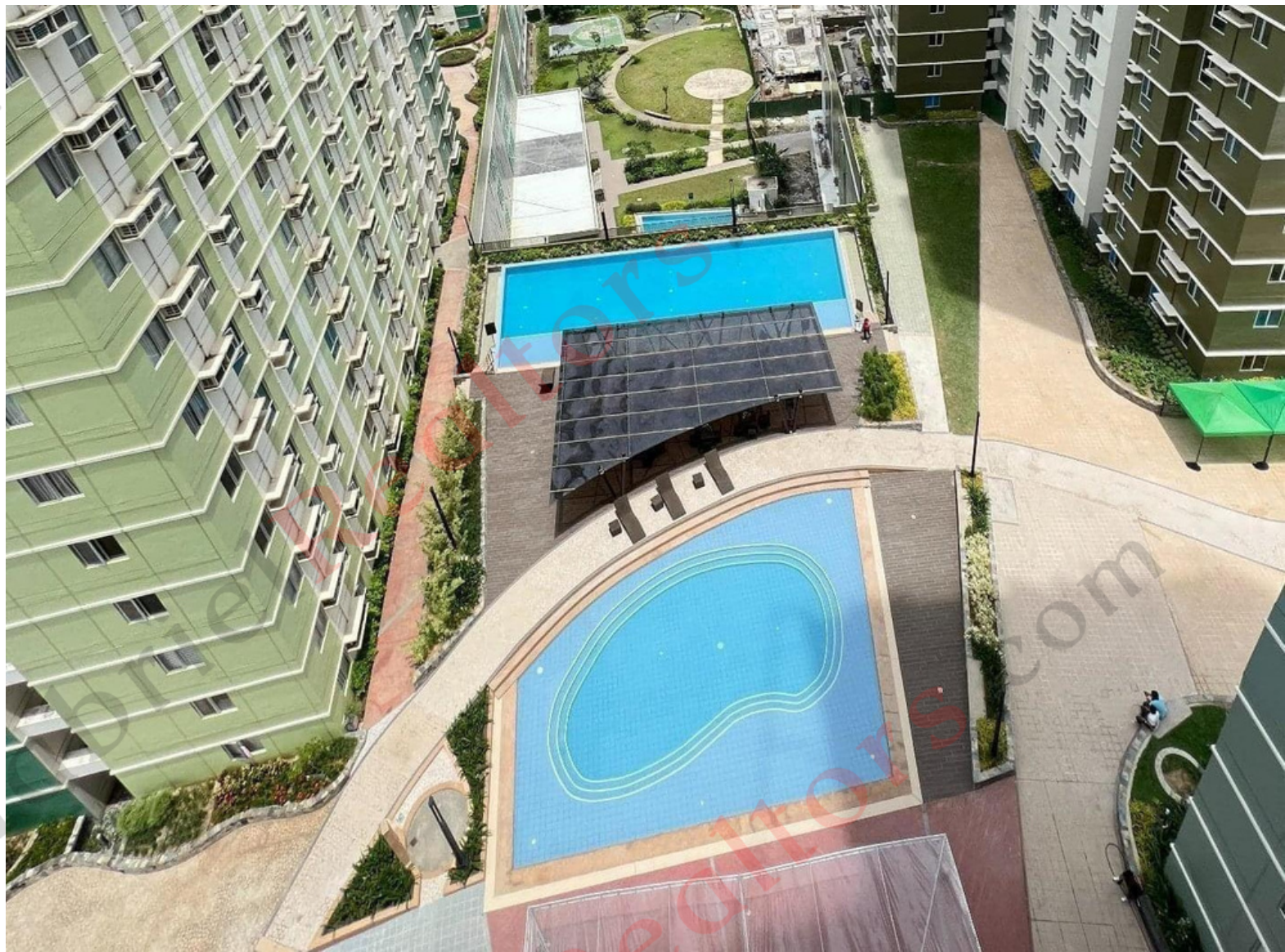
Amenities

Active Zone

Lounge Pool
Multi-Purpose Hall
Outdoor Fitness
Area
Teen Zone
Play Zone
Shooting Court

Passive Zone

Lap Pool
Sun Deck
Kiddie Pool
Courtyard
Pocket Gardens





Artist's Perspective

*Grand Lawn and
Pocket Gardens*



Artist's Perspective

Swimming Pools



COMMUNITY AMENITIES

Adult & Kiddie Swimming Pool

Multipurpose Hall

Shooting Court

Children's Play Area

Garden Areas

16 Retail Spaces at Tower 1 & 2

Artist's Perspective

RETAIL STRIP at the Towers

NOW OPEN



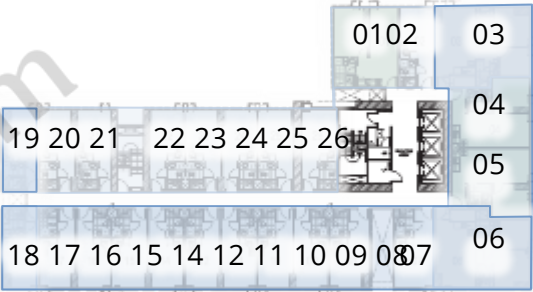
MerryMart
Don Jjang Korean
BBQ Chill Laundry
Lounge Alessi
Coffee Lab
KBC Restaurant
Thai Boran
(Massage)



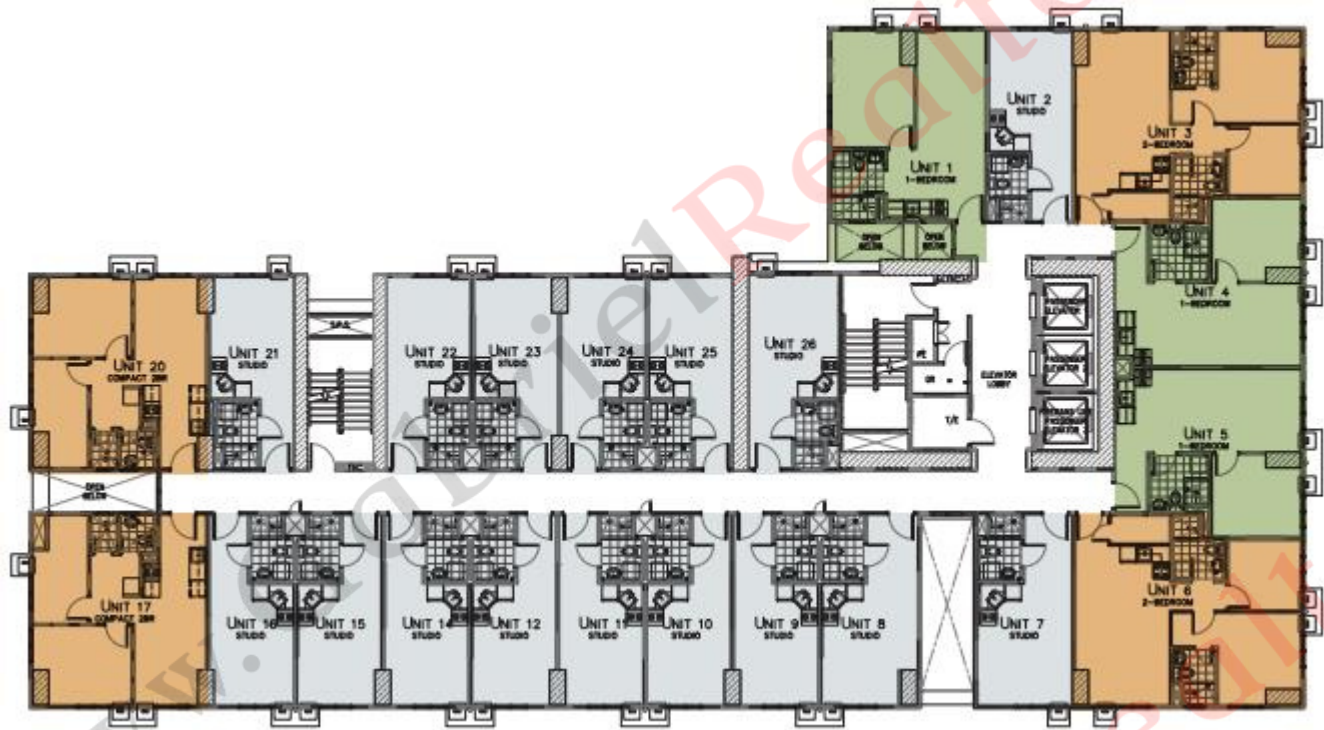
TYPICAL FLOOR PLAN (TOWER 5)



Facing Mountain Ranges



Facing Cebu IT Park



Facing Courtyard

Facing Grand Lawn

- Studio
- 1 Bedroom
- 2 Bedroom

TYPICAL STUDIO UNIT



22.80 sq.m.
APPROX. FLOOR AREA



Artist's Perspective



Actual Dress-up Unit

TYPICAL 1 BEDROOM UNIT



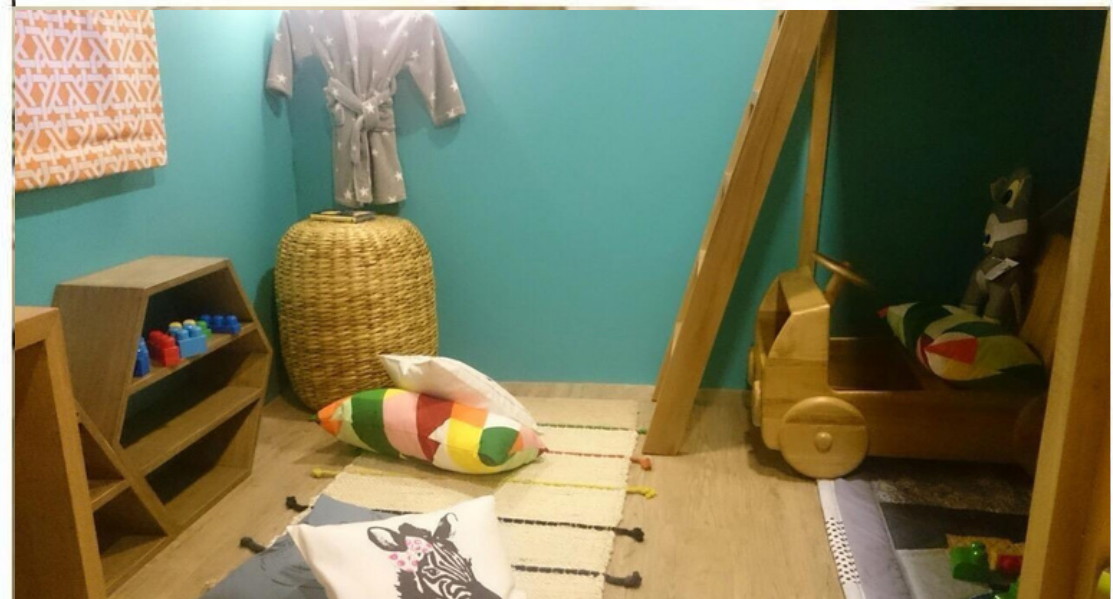
40.69 sq.m.
APPROX. FLOOR AREA



TYPICAL 2 BEDROOM UNIT



57.10 sq.m.
APPROX. FLOOR AREA



2 BR UNIT (SMART SIZE)

47 sq.m.
APPROX. FLOOR AREA



Why Avida Towers Riala?

URBAN GREEN LEISURE & LIFESTYLE

- Approximately 10,000 sq.m. of green areas and open spaces
- Sensible and convenient amenities
- 24/7 security & well-maintained facilities

Avida Towers
Riala



THE ADDRESS OF CHOICE

Cebu IT Park is the preferred living destination for young professionals and families given its prime location.

Located within Cebu IT Park, Avida Towers Riala offers easy access to places of work, schools, entertainment and shopping.





Avída Towers Riala

VALUE FOR MONEY & VALUE APPRECIATION

2 Ways to earn in Real Estate

- Rental Income
- Value Appreciation

Avida Towers Riala

158% Increase in Value since
its launch in 2012

Up to 25K Rental for Studio Units



Avída Towers Riala

LIVE WITHOUT COMPROMISE

FOR TRAINING PURPOSES ONLY V04232020



Gabriel

REALTY & BROKERAGE

Talk to Us

WWW.GABRIELREALTORS.COM